



CirCIE 2019

Challenges for the Islands in the era of the Circular Economy

National Regulation for Electrical Mobility in Portugal

Modesto de Morais

iep – Instituto Eletrotécncico Português

Under the auspices of



SMile 2019

6th Sustainable Mobility & Intelligent Transport conference





CirCIE 2019

**Challenges
for the Islands
in the era of
the Circular Economy**

under the auspices of



ERSE

ENTIDADE REGULADORA
DOS SERVIÇOS ENERGÉTICOS

ERSE is the national authority for the regulation of energy sector. It's also responsible for the electric mobility regulation.



MOBI.E

Since 2009, MOBI.E, a public organization, was created for promoting and managing the first electrical vehicles charging infrastructure.

SMile 2019

**6th Sustainable Mobility
& Intelligent Transport
conference**





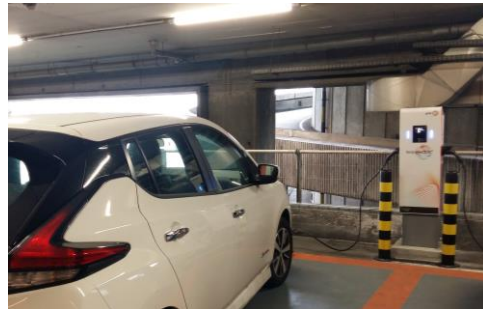
CirCIE 2019

**Challenges
for the Islands
in the era of
the Circular Economy**

under the auspices of



The beginners (2010). Slow charging points, all of them free of charge. Now there are many charging points providers. Are almost all supervised by MOBI.E.



Now, more and more slow charging stations are being installed at most of the shopping centers and other public access and commercial infrastructures (by now still free of charges). The accesses are all managed by MOBI.E.



There are also fast charging points. Since 1 November 2018, the battery charging is processed and paid by the unit occupation time and energy consumption. There are many units operators and energy providers. Every paying charging cards could be used at every pay per use charging points. MOBI.E still being a common interface.

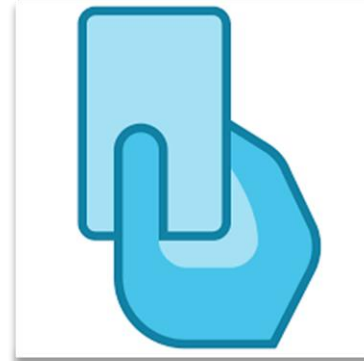
SMile 2019

**6th Sustainable Mobility
& Intelligent Transport
conference**





After November 1, 2018 many private energy providers and charging stations were established. Right now there are 27 op.



The accessing cards from each one of the operators can be used at every rapid charging station from all available operators.





CirCIE 2019

**Challenges
for the Islands
in the era of
the Circular Economy**

under the auspices of



Relevant Data About Electric Mobility in Portugal

Energy consumption	10 373 478	kWh
Electrical loads performed	1 059 551	un
Accessed charging points	960	un
Avoided CO ₂	6 864 649	kg/CO ₂
Client's Number	10 332	un

Data since 2010, from MOBI.E

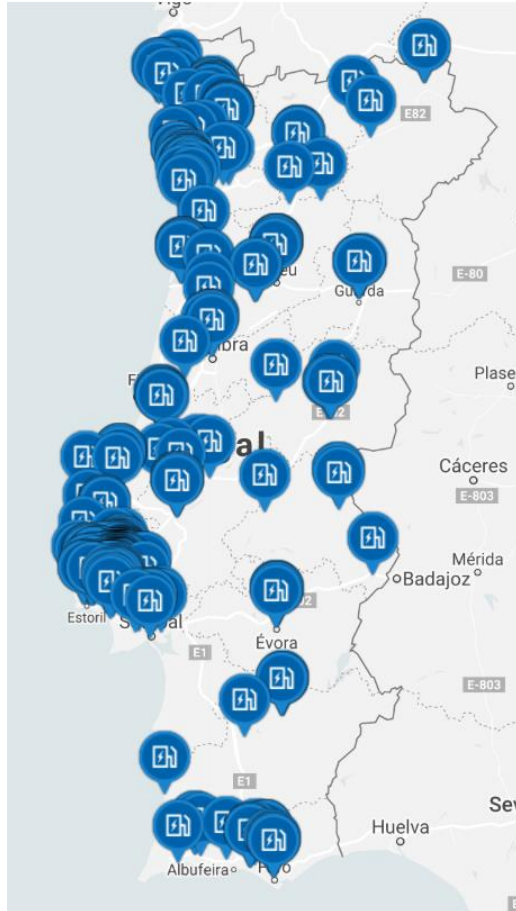
SMile 2019

**6th Sustainable Mobility
& Intelligent Transport
conference**

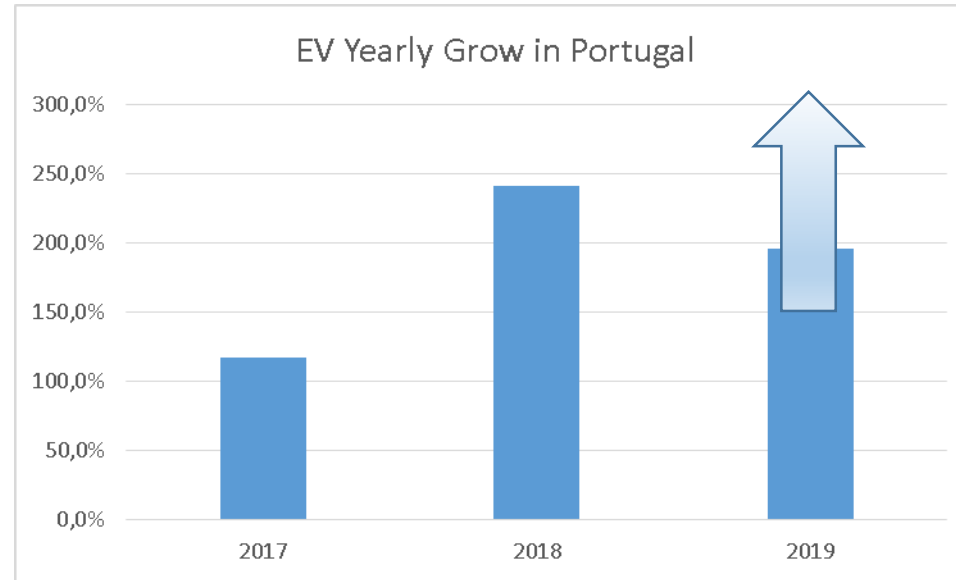




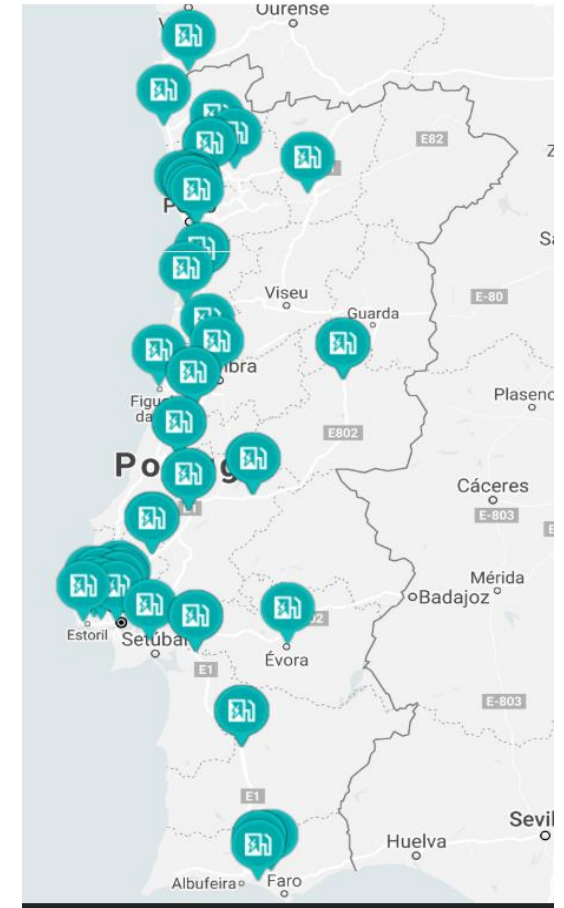
CirCIE 2019
Challenges for the Islands in the era of the Circular Economy



← The Slow Chargers



The Fast Chargers →



SMile 2019

6th Sustainable Mobility & Intelligent Transport conference





CirCIE 2019

**Challenges
for the Islands
in the era of
the Circular Economy**

under the auspices of



Since 2009, at least 18 legal documents were prompted for regulating and promoting the electric mobility initiative in Portugal.

DIRECTIVE 2014/94/UE - It establishes a common framework of measures for the creation of an infrastructure for alternative fuels in the Union in order to minimize dependence on oil and to mitigate the environmental impact of transport.

Decree-Law no. 90/2014 - Establishes the legal regime of electric mobility, applicable to the organization, access and exercise of activities related to electric mobility, as well as the rules for the creation of a pilot electric mobility network.

Dispatch no. 8809/2015 - It integrates the Action Plan for Electric Mobility, the locations of the fast and normal charging stations, of the pilot phase of the MOBI.E network, still to be installed and temporary transmission of the ownership of these network loading points pilot of the electric mobility and those already installed for the managing body of the electric mobility network.

Regulation no. 879/2015 - Establishes the rules for the exercise of activities related to electric mobility covered by ERSE regulation.

Technical guide of electrical installations for the feeding of electric vehicles - An informative and guiding working document, designed to provide indications for the design, design and execution of electrical installations for the feeding of electric vehicles.

SMile 2019

**6th Sustainable Mobility
& Intelligent Transport
conference**





CirCIE 2019

**Challenges
for the Islands
in the era of
the Circular Economy**

under the auspices of



Ordinance no. 240/2015 - Establishes the amount of fees due for the assessment of the application, and effective, registration of commercialization of electricity for electric mobility, issuance of the license of operation of loading points and conducting periodic inspections.

Ordinance no. 241/2015 - Establishes the technical requirements that are subject to the assignment of license to exercise the activity of operation of charging points of the electric mobility network, as well as some procedural rules applicable to the instruction of the respective application.

Ordinance no. 252/2015 - This Ordinance seeks to review Ordinance No. 949-A / 2006, of September 11, which approved the Technical Rules for Low Voltage Electrical Installations (**RTIEBT**).

Ordinance no. 220 / 2016 - Establishes the minimum powers and technical regulations that must be met by the loading facilities of electric vehicles in buildings and other urban operations, which have covered parking spaces.

Ordinance No. 221/2016 - Establishes the rules applicable to the installation and operation of the charging points of electric vehicle batteries, as well as the rules applicable to the installation and operation of the charging points, must comply with the technical and functional requirements foreseen for smart meters.

Ordinance No. 222/2016 - Establishes the terms applicable to private use licenses in the public domain, for the installation of electric vehicle battery charging points in a public place publicly accessible in the public domain, especially when of the water minimum

Ordinance no. 231/2016 - Establishes the coverage, conditions and minimum capital of the compulsory insurance of civil responsibility of the activities of commercialization of electricity for electric mobility and operation of charging points for electric mobility.

ERSE: Electric Mobility in Portugal - <http://www.erse.pt/pt/legislacao/diplomas/Paginas/MobilidadeEletrica.aspx>

SMile 2019

**6th Sustainable Mobility
& Intelligent Transport
conference**



Thank you for your attention



modesto.morais@iep.pt



CirCIE 2019
**Challenges
for the Islands
in the era of
the Circular Economy**

Thursday 28 - Friday 29 March 2019, Nicosia, Cyprus

under the auspices of



SMile 2019

**6th Sustainable Mobility
& Intelligent Transport
conference**

