



# CIRCIE 2019

## Challenges for the Islands in the era of the Circular Economy

Promoting Sustainable Urban Mobility Plans in Conjunction  
with Urban Transport Developments and Technology  
Integration

*Pantelis Georgiou*

*Ipsonas Municipality*

Under the auspices of



# SMile 2019

6th Sustainable Mobility  
& Intelligent Transport  
conference





**CirCIE 2019**

**Challenges  
for the Islands  
in the era of  
the Circular Economy**

under the auspices of



## Ipsonas at a glance

- Population: Estimated at around 14000 people (11,117 in the 2011 census)
- Area: ~ 33 Km<sup>2</sup> (second largest municipality in Limassol)
- Households: ~ 4900 units
- Largest industrial area in the district (more than 2,675,000m<sup>2</sup>) with almost 2100 workers commuting every day
- Mostly residential with two commercial roads south of the old town centre and one to the east
- Old Town Center is highly underdeveloped and is inhabited by third country residents (mostly from Syria)
- Served by 3 bus routes No. 16,17 & 18
- Agreed to place 34 bus shelters under the Memorandum of Cooperation in Ipsonas and 20 in Trachoni and Kolossi

**SMile 2019**

**6th Sustainable Mobility  
& Intelligent Transport  
conference**

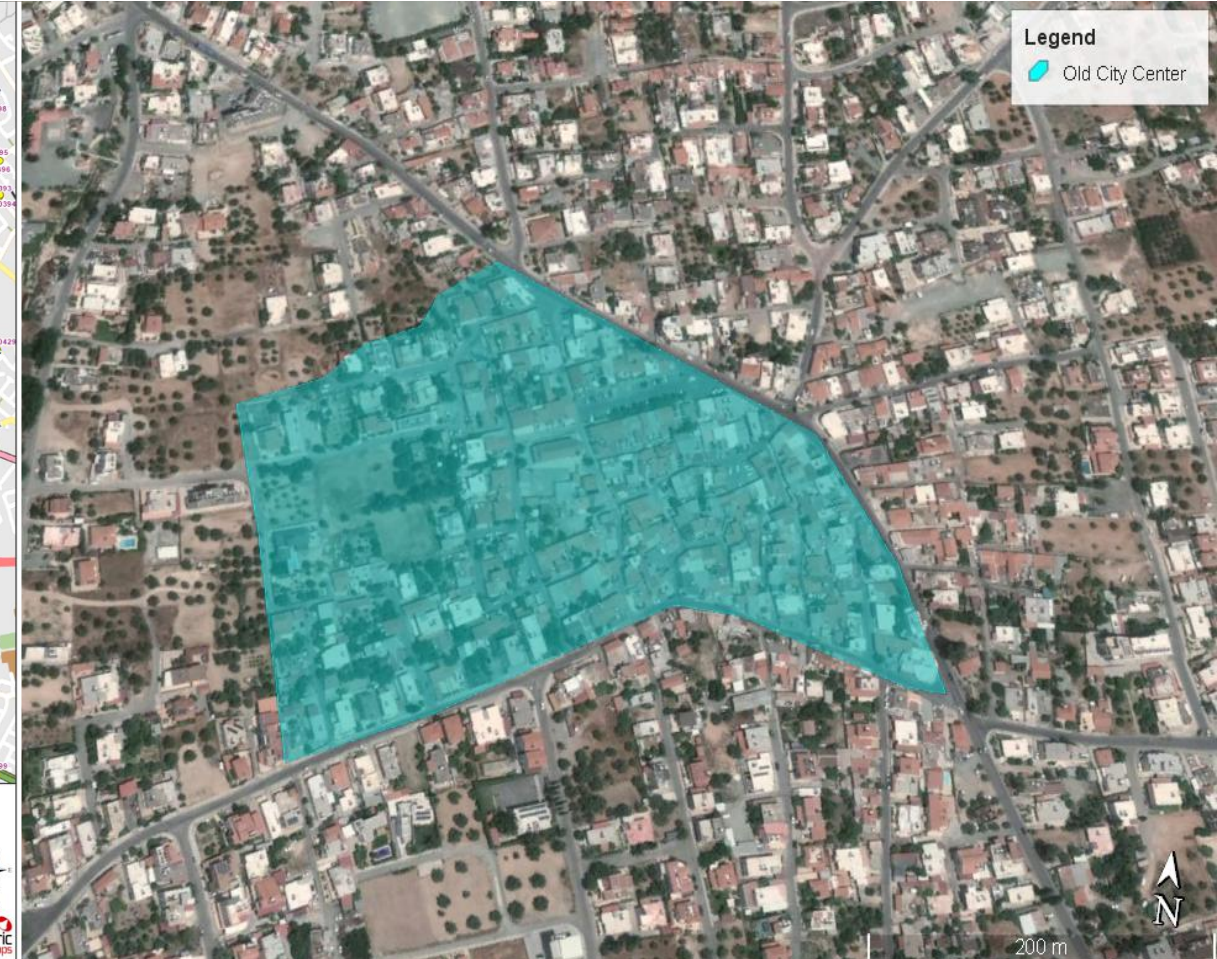
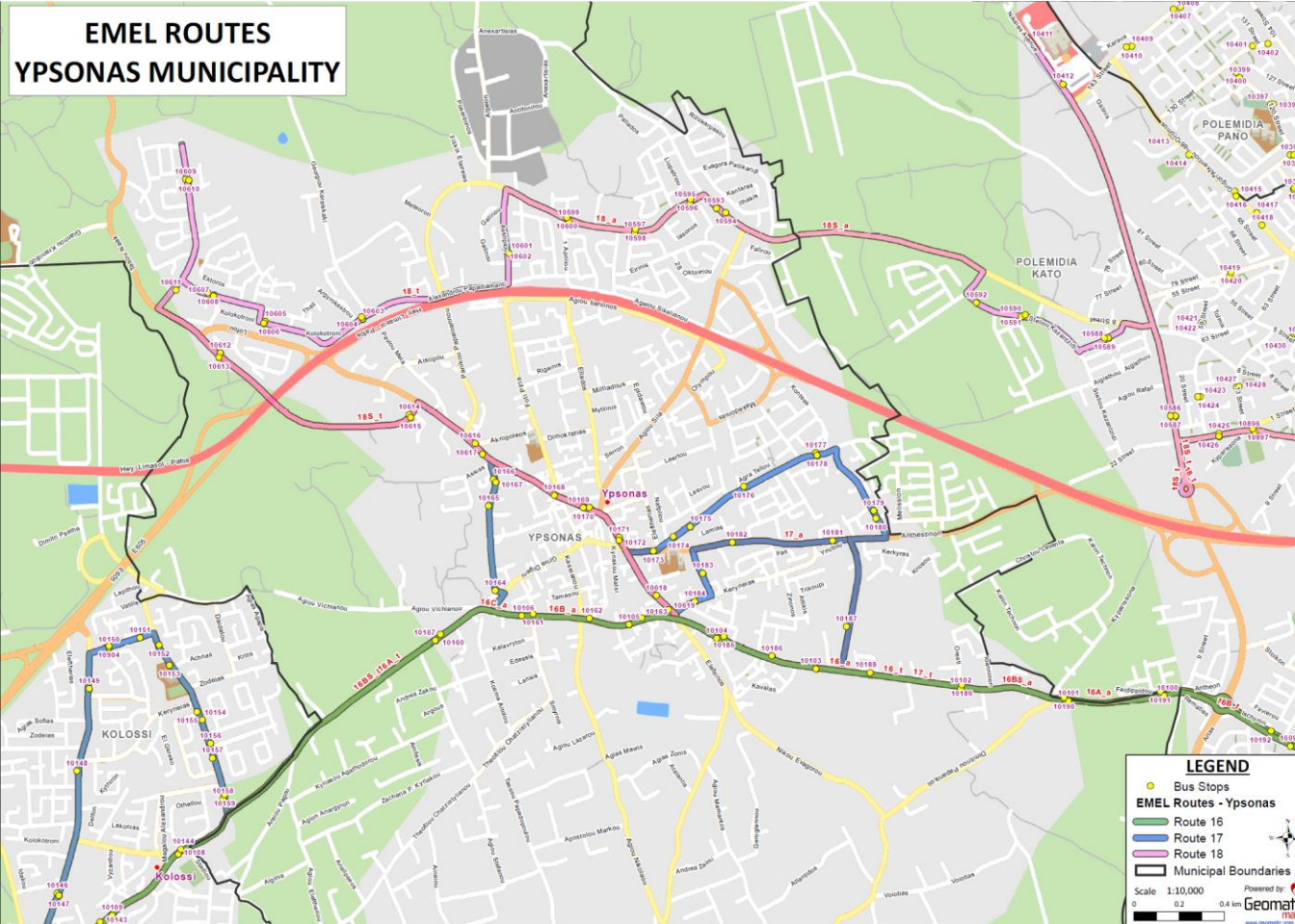




CiRCIE 2019

Challenges  
for the Islands  
in the era of  
the Circular Economy

under the auspices of



SMile 2019

6th Sustainable Mobility  
& Intelligent Transport  
conference





**CirCIE 2019**

**Challenges  
for the Islands  
in the era of  
the Circular Economy**

under the auspices of



### Actions for SUMP Development

- Ban all petrol and diesel car usage within the Old Town Center
- Change the zone usage from residential to mixed residential and commercial
- Allow loading and unloading of supplies for shops using only electric trucks provided by the municipality at specific time intervals
- Link the bus routes in 2020 with all the residential areas of Ipsos as well as the industrial areas
  - *Added new routes to serve the industrial area as well as to connect the West suburbs of the city with the East*
  - *Upgraded the existing bus routes to connect all the residential areas of Ipsos with the Old Town Center*
- Buy land to create parking places around and not within the proposed enclosed area of the Old Town Center
- Penalize the usage and ownership of cars in each household by charging public parking spaces within neighborhoods
- Create one-way streets on every secondary network road to make the use of cars more difficult and time consuming
- Connect all public buildings, large green areas, the Old Town Center, schools and monuments including churches with a complete pedestrian and cyclist network
- Integrate the bus geo-location system with the application e-ipsos so that real time data on the arrival of buses at certain interest points is given under one app
- Through the use of digital signage on smart poles and info kiosks relay the information of bus arrival to certain interest points

**SMile 2019**

**6th Sustainable Mobility  
& Intelligent Transport  
conference**





**CirCIE 2019**

**Challenges  
for the Islands  
in the era of  
the Circular Economy**

under the auspices of



Google Earth

Image © 2019 DigitalGlobe

**SMile 2019**

**6th Sustainable Mobility  
& Intelligent Transport  
conference**





**CirCIE 2019**

**Challenges  
for the Islands  
in the era of  
the Circular Economy**

under the auspices of



## **Objectives and Targets**

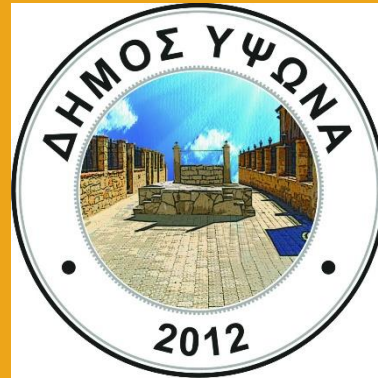
- Create a sustainable city through the implementation of SUMP by developing economic, social, cultural and environmental growth
- Reduce Carbon Footprint and help meet National targets
- Develop new businesses and increase employability in the area
- Reduce the usage of cars and thus minimize congestion in the commercial roads
- Increase biodiversity in the area
- Attract tourists from surrounding areas by making accessibility easier as well as promoting the local heritage
- Help repair the old stone houses in the underdeveloped Town Center and revitalize the area
- Promote the use of renewable resources

**SMile 2019**

**6th Sustainable Mobility  
& Intelligent Transport  
conference**



# Thank you for your attention



*Pantelis Georgiou*  
*Ipsonas Municipality Mayor*  
*E-mail: [mayor@ipsonas.org](mailto:mayor@ipsonas.org)*



**CIRCIE 2019**  
**Challenges**  
**for the Islands**  
**in the era of**  
**the Circular Economy**

under the auspices of



Thursday 28 - Friday 29 March 2019, Nicosia, Cyprus

**SMile 2019**

**6th Sustainable Mobility  
& Intelligent Transport  
conference**

